



Roxtec RS Ex afdichting met SL RS

Ex-geclassificeerde afdichting voor bevestiging door middel van lassen, voor een enkele kabel of leiding.

De Roxtec Rs Ex met SL RS is een afdichting die is geclassificeerd voor Ex e- en Ex tb-gebieden. De afdichting heeft een metalen buis en is ontworpen voor enkele kabels of leidingen. The entry seal has two halves with removable layers making it adaptable to cables and pipes of different sizes. The sleeve is welded to the structure.



- Knaagdierbestendig
- Snel en eenvoudig te installeren

Producteigenschappen



Brandvertragend



Waterdicht



Gasdicht



Ex-geclassificeerd

Installatiestructuur



Metaal

Montagetype



Lassen

Specificaties en certificaten

Brand

- A-KLASSE volgens IMO 2010 FTP-code
- H-KLASSE volgens IMO 2010 FTP-code + HC-brandcurve
- Jet fire volgens ISO 22899-1 en OTI 95634

Dichtheid

- Gas: 2,67 bar (calamiteitendruk)
- Water: 4 bar (calamiteitendruk)

Supports

- Ex-geclassificeerd

Gegevens van afdichtcomponenten

Afdichtcomponenten



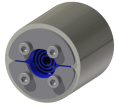
RS W Ex set

Ga naar [roxtec.com](https://www.roxtec.com) voor uitgebreide informatie.

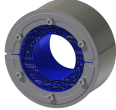


Vooraf geconfigureerde doorvoersets

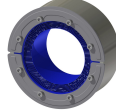
mm/kg



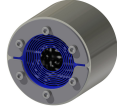
RS 25 W Ex
AISI316/PRIMED



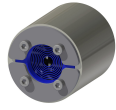
RS 125 W Ex AISI316
WOC/PRIMED



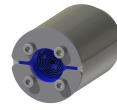
RS 150 W Ex AISI316
WOC/AISI316



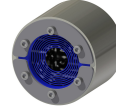
RS 75 W Ex
AISI316/AISI316



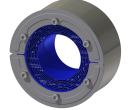
RS 50 W Ex
AISI316/AISI316



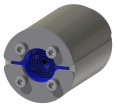
RS 43 W Ex
AISI316/AISI316



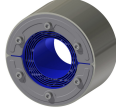
RS 75 W Ex
AISI316/PRIMED



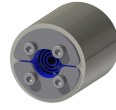
RS 125 W Ex AISI316
WOC/AISI316



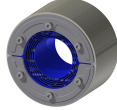
RS 43 W Ex
AISI316/PRIMED



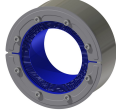
RS 100 W Ex AISI316
WOC/PRIMED



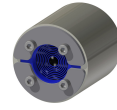
RS 25 W Ex
AISI316/AISI316



RS 100 W Ex AISI316
WOC/AISI316



RS 150 W Ex AISI316
WOC/PRIMED



RS 50 W Ex
AISI316/PRIMED

| Titel | Configuratie | Afmetingen opening Ø | Gewicht | Art. nr. |
|---------------------------------|-----------------|-------------------------|---------|-----------------|
| RS 100 W Ex AISI316/AISI316 | | | 2.3 | EXRSW1000002121 |
| RS 25 W Ex AISI316/PRIMED | 1x (3.6-12.0) | 25 - 26 | 0.17 | EXRSW0250002112 |
| RS 125 W Ex AISI316 WOC/PRIMED | 1x (66.0-98.0) | 125 - 127 | 2.9 | EXRSW0125102112 |
| RS 150 W Ex AISI316 WOC/AISI316 | 1x (93.0-119.0) | 150 - 152 | 3.2 | EXRSW0150102121 |
| RS 100 W Ex AISI316/PRIMED | | | 2.2 | EXRSW1000002112 |
| RS 75 W Ex AISI316/AISI316 | 1x (24.0-54.0) | 75 - 77 | 1.5 | EXRSW0750102121 |
| RS 50 W Ex AISI316/AISI316 | 1x (8.0-30.0) | 50 - 52 | 0.9 | EXRSW0500002121 |
| RS 43 W Ex AISI316/AISI316 | 1x (4.0-23.0) | 43 - 45 | 0.6 | EXRSW0430102121 |
| RS 75 W Ex AISI316/PRIMED | 1x (24.0-54.0) | 75 - 77 | 1.5 | EXRSW0750002112 |
| RS 125 W Ex AISI316 WOC/AISI316 | 1x (66.0-98.0) | 125 - 127 | 3.2 | EXRSW0125102121 |
| RS 43 W Ex AISI316/PRIMED | 1x (4.0-23.0) | 43 - 45 | 0.6 | EXRSW0430002112 |
| RS 125 W Ex AISI316/PRIMED | | | 3.2 | EXRSW1250002112 |
| RS 125 W Ex AISI316/AISI316 | | | 3.2 | EXRSW1250002121 |
| RS 100 W Ex AISI316 WOC/PRIMED | 1x (48.0-70.0) | 100 - 102 | 2 | EXRSW0100102112 |
| RS 25 W Ex AISI316/AISI316 | 1x (3.6-12.0) | 25 - 26 | 0.24 | EXRSW0250002121 |
| RS 100 W Ex AISI316 WOC/AISI316 | 1x (48.0-70.0) | 100 - 102 | 2.3 | EXRSW0100102121 |
| RS 150 W Ex AISI316 WOC/PRIMED | 1x (93.0-119.0) | 150 - 152 | 3.2 | EXRSW0150102112 |
| RS 50 W Ex AISI316/PRIMED | 1x (8.0-30.0) | 50 - 52 | 0.9 | EXRSW0500002112 |

The product information provided by Roxtec does not release the purchaser of the Roxtec system, or part thereof, from the obligation to independently determine the suitability of the products for the intended process, installation and/or use. Roxtec gives no guarantee for the Roxtec system or any part thereof and assumes no liability for any loss or damage whatsoever, whether direct, indirect, consequential, loss of profit or otherwise, occurred or caused by the Roxtec systems or installations containing components not manufactured by an authorized manufacturer and/or occurred or caused by the use of the Roxtec system in a manner or for an application other than for which the Roxtec system was designed or intended. Roxtec expressly excludes any implied warranties of merchantability and fitness for a particular purpose and all other express or implied representations and warranties provided by statute or common law. User determines suitability of the Roxtec system for intended use and assumes all risk and liability in connection therewith. In no event shall Roxtec be liable for indirect, consequential, punitive, special, exemplary or incidental damages or losses. The Roxtec products are offered and sold in accordance with the conditions of the Roxtec General Terms of Sales. The latest version of the Roxtec General Terms of Sales can be downloaded from <https://www.roxtec.com/en/about-us/about-roxtec/general-terms-of-sales/> We reserve the right to make changes to the product and technical information without further notice. Any errors in print or entry are no claims for indemnity. The content of this publication is the property of Roxtec International AB and is protected by copyright. This document was generated on: 2024-04-23